

MODIFIED SOWING TRIAL 2021

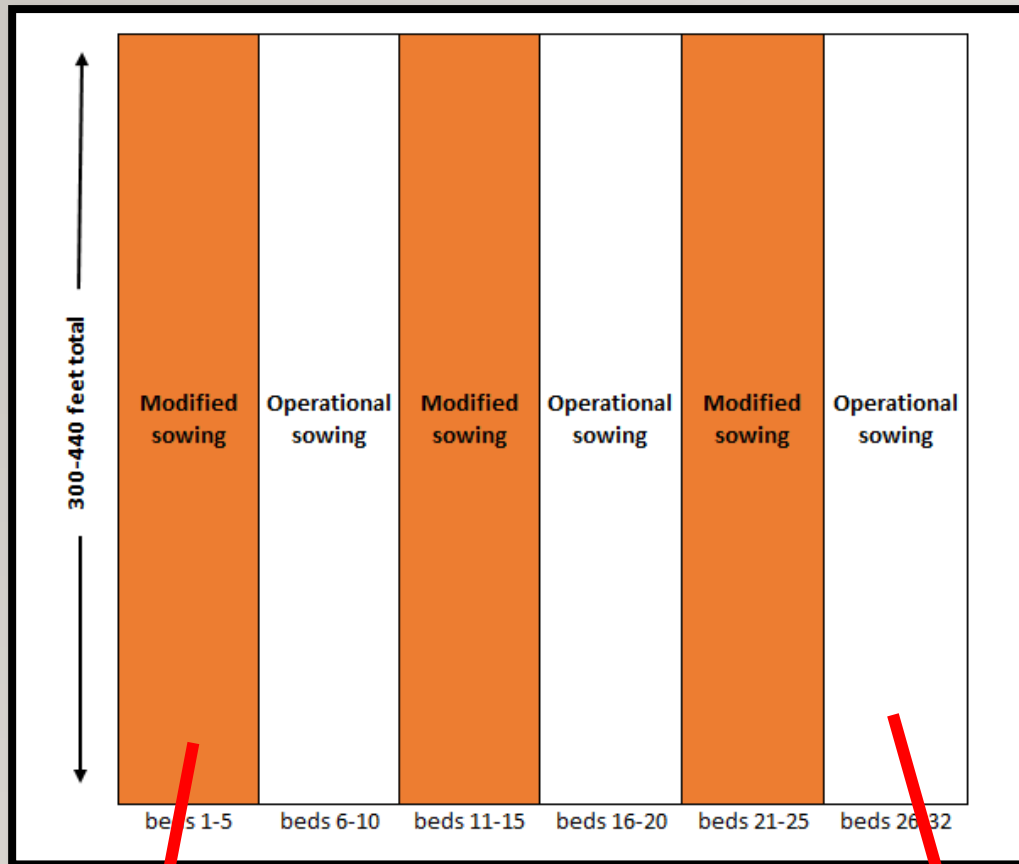
SFNMC 2021 ADVISORY MEETING

NOVEMBER 3 - 4, 2021

2021 MODIFIED SOWING OPERATIONS TRIAL

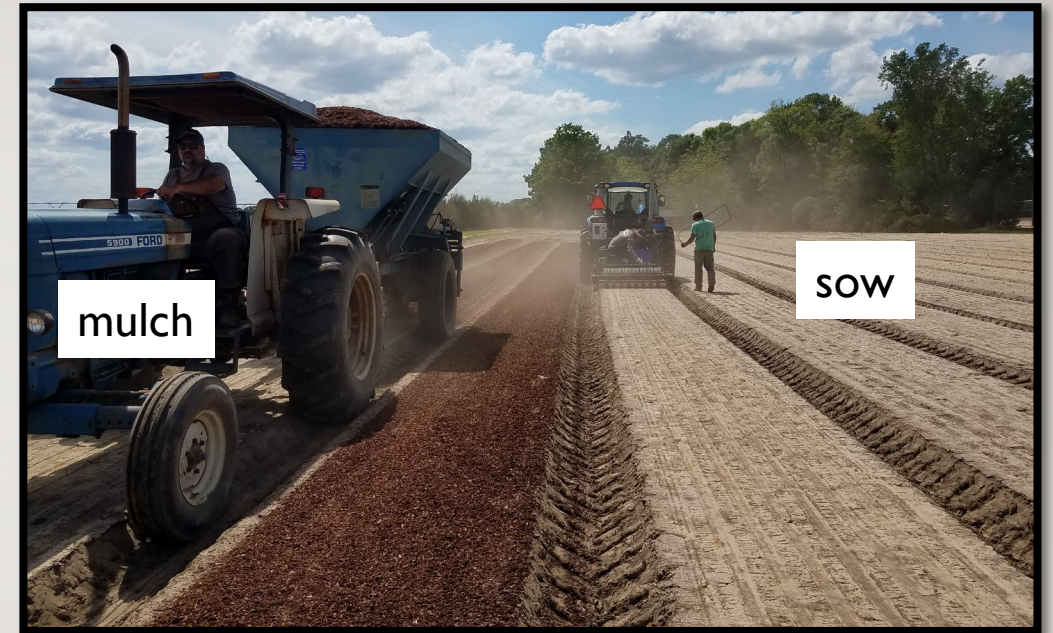
- Trial proposed by mid-size nursery operator to better utilize equipment and labor availability at time of sowing
- Trial designed to quantify differences in seedling characteristics and weed control in beds prepared and sown by 2 methods:
 1. Operational method: prepare beds, sow, apply pre-emergent herbicides, mulch, irrigate
 2. Modified method: prepare beds, apply pre-emergent herbicides, irrigate, sow \pm 3 days later, mulch, irrigate
- Installed at K & L Forest Nursery



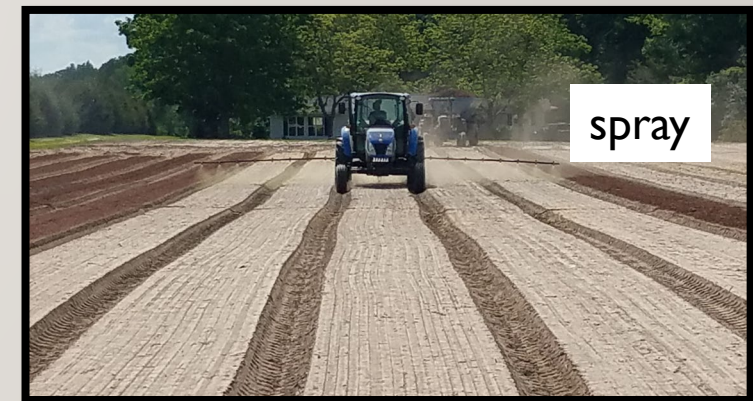


on April 23, pre-emergent herbicides sprayed and
beds irrigated
on April 27 (4 days later), sowed, mulched, and
irrigated

on April 27:
sowed
sprayed pre-emergent herbicides
mulched and irrigated



SOW



Modified Sowing Operations Trial – during 2021

- May 11 and May 18 – grower counted germination with results showing no differences between operational and modified sowing beds
- Grower visually monitored seedling health and weed populations through the summer with no differences in quantities or types of weeds
- Collection of sample seedlings from each treatment area is scheduled for Nov. 9 for measurements and analysis of sowing operation effects on seedling growth
- If we find no differences in seedling quality, then nurseries may consider the modified method for future sowing operations when labor or equipment availability is limited



QUESTIONS?

CONTACT

Nina Payne

334-844-4917

nina.payne@auburn.edu